

Canyon Crest Home

Sisters, OR

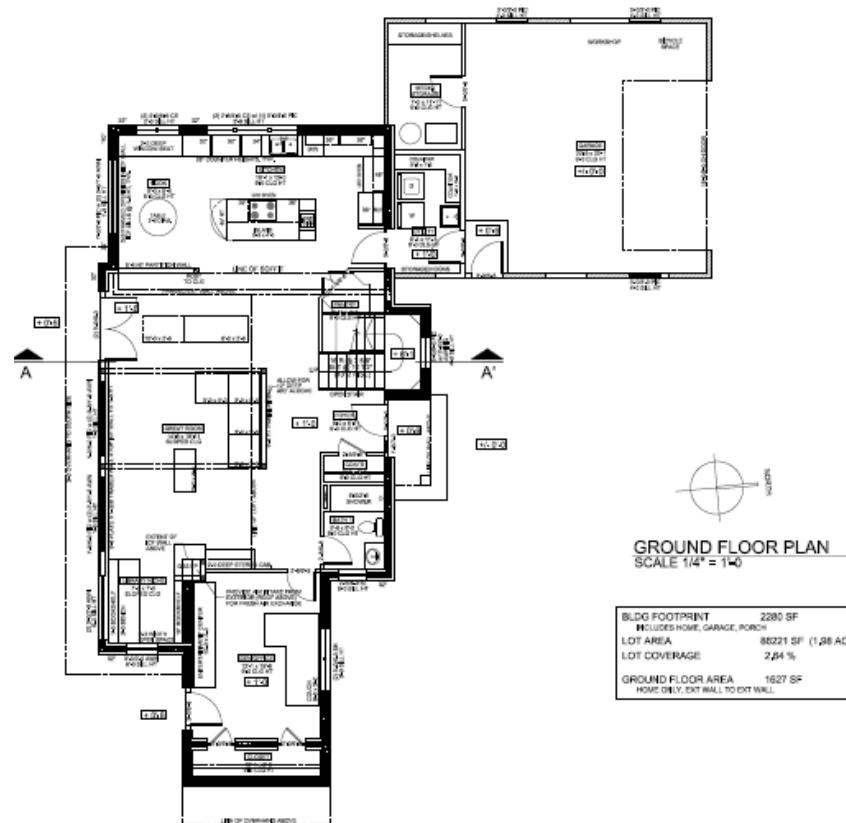




Canyon Crest Home Sisters, OR

Profile:

- 2,750 total square feet
- 11" iForm® by Reward Wall Systems, Inc.
- Main Floor Concrete slab with radiant heat, second floor I Joist
- Acrylic stucco exterior finish
- Wood framed roof, 75% truss, 25% 2x12 stacked; weathered copper color metal



ICF Distributor: Hooker Creek Construction Materials
ICF Installer/General Contractor: Duey Brothers, Inc.
Architect: Peter Gramlich, Gramlich Design & Planning
Engineer: Lennie Brant, LB Engineering

Canyon Crest Home Sisters, OR

Construction Began May 2007



Canyon Crest Home

Sisters, OR



Completed March 2008

Canyon Crest Home Sisters, OR

- Certified Energy Star™ and Earth Advantage™



NORTHWEST




- Home is situated on a rim of canyon – orientated to maximize passive solar

Canyon Crest Home Sisters, OR

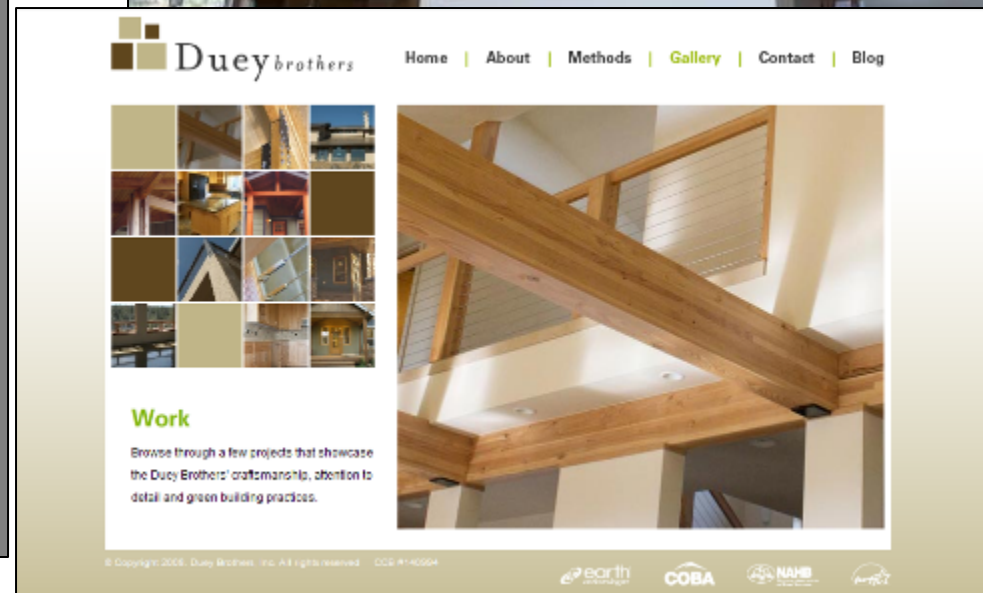
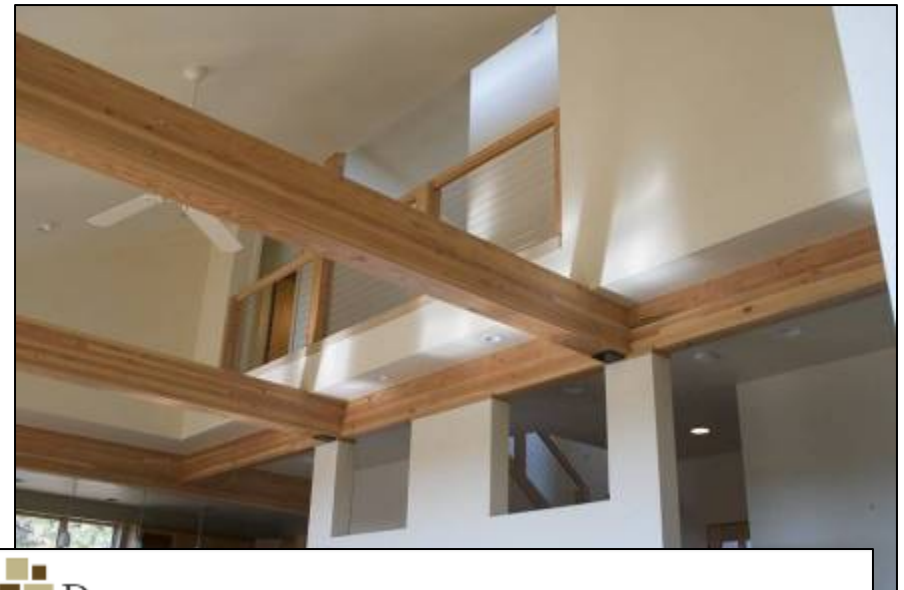
- Duey Brothers had two open houses, one during ICF framing, and one at completion. Photos are posted on their website and on their blog.

JUN 24, 2008

ICF Framing



Here is an example of Insulated Concrete Form exterior walls with wood framed second floor structure. ICF provides superior sound and heat insulation. This home is ready for radiant heat installation. Followed by stained concrete slab.



Duey brothers Home | About | Methods | Gallery | Contact | Blog

Work

Browse through a few projects that showcase the Duey Brothers' craftsmanship, attention to detail and green building practices.

© Copyright 2008, Duey Brothers, Inc. All rights reserved. CCR #140504

earth COBA NAHB